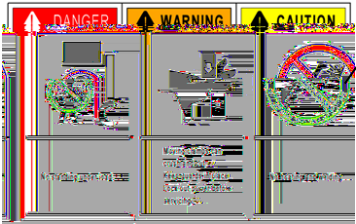
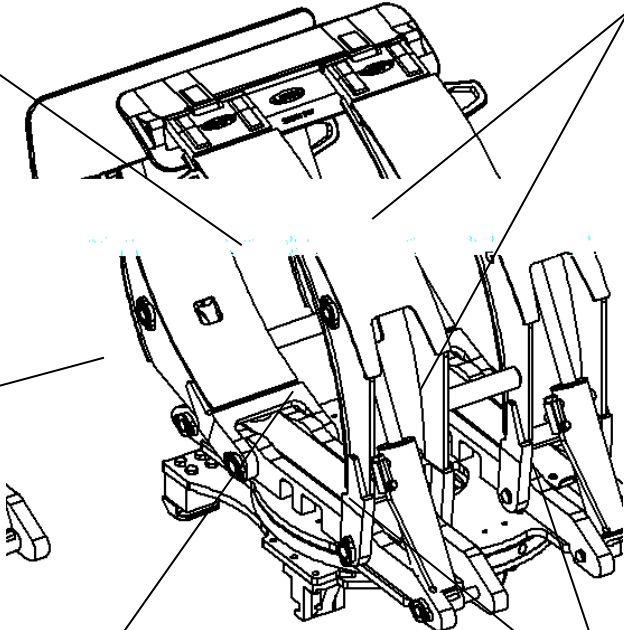
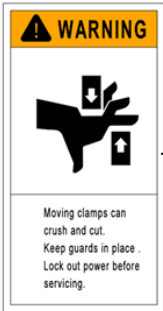
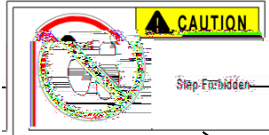


Contents

- **1**
- **6**
- **8**
- **14**
- **18**
- **20**
- **23**

E



■

■ 2

■ E

■

9

■

!

%

)

"!!!

" "2

F



"

■ T

■

F

■ 5

E



■ :

■ D

E



■

■ 2

2

D

■ :

■ :

■ :

7

E

A

E

7

3

9 A

(8 " %

3

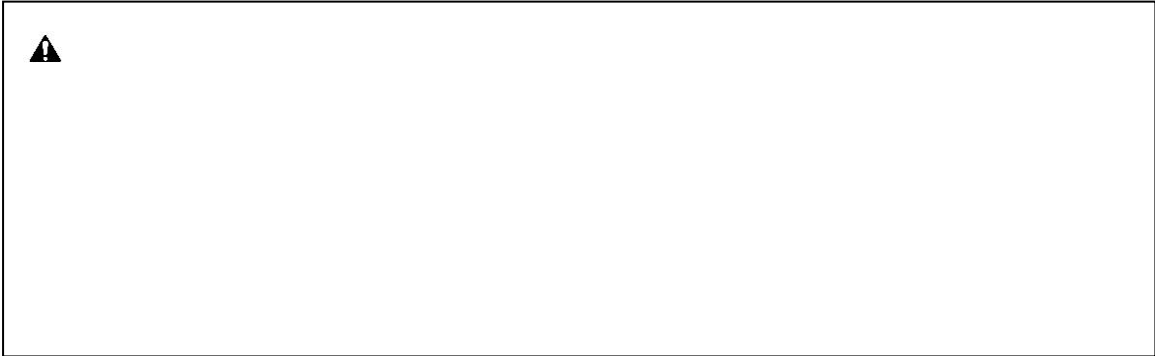
:

E

2

E

A



3

F

) A

"% A G

E

Model	Pressure value bar		Flow value L/min		
			Rotary motion		
	min	max	min	recommend	max
ZJ10R/11R/12R/13R/13H	140	160	19	26	38
ZJ22H/25H/27H/33H	140	160	19	38	57
ZJ38H/35R/42H/45R	140	160	38	57	76

5

7

7

E

" :D) !! (

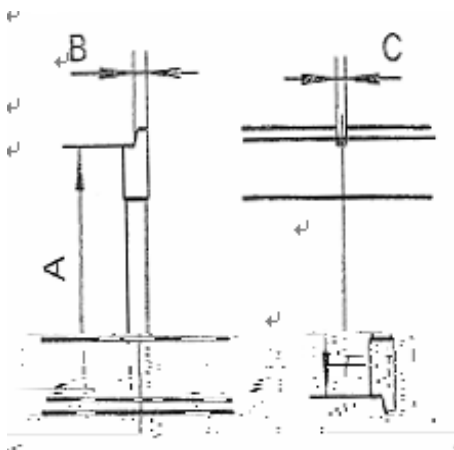


Figure 1

Installation level	A		B		C	
	min	max	min	max	min	max
	380	381	15	16	15.2	16.8
	474.5	476	20.5	21.5	18.2	19.8
	595.5	597	24.5	25.5	18.2	19.8

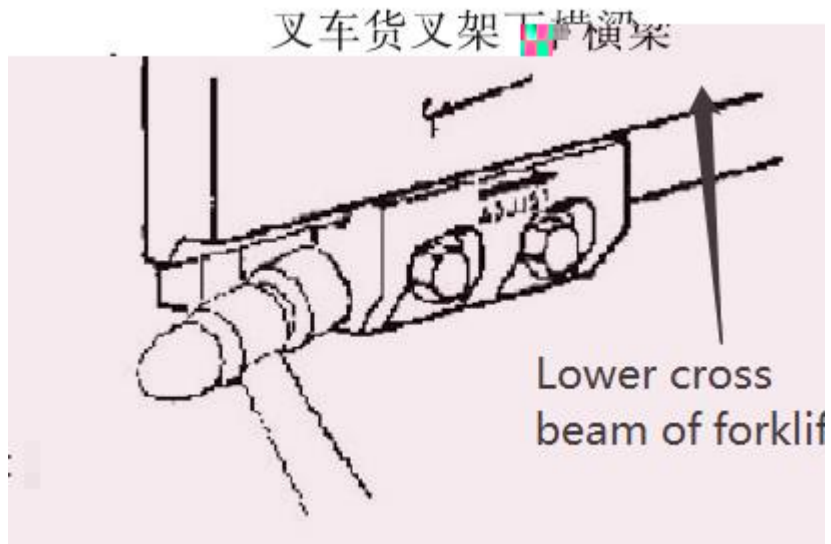


3

" 4

E

"% "



(4

"!

'!! ,

"

'!!

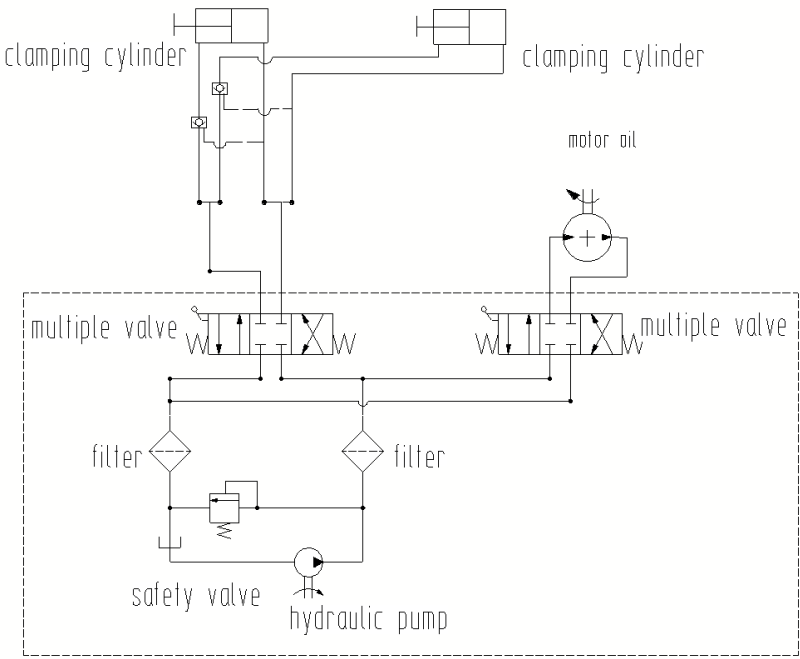
D

9 A

E

") "

E



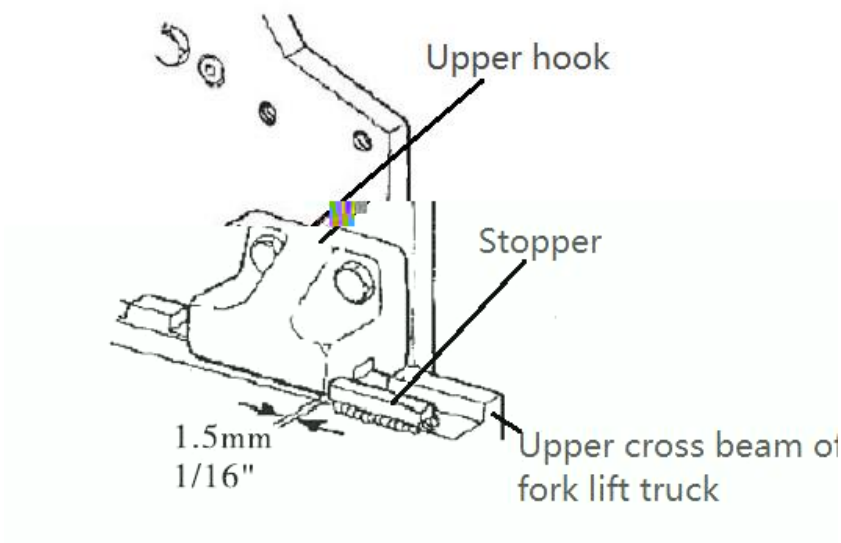
) 2

"

:

3

!!



Upper hook Stopper Upper crossbeam of the forklift carriage

"! D

"" A

" 4

9

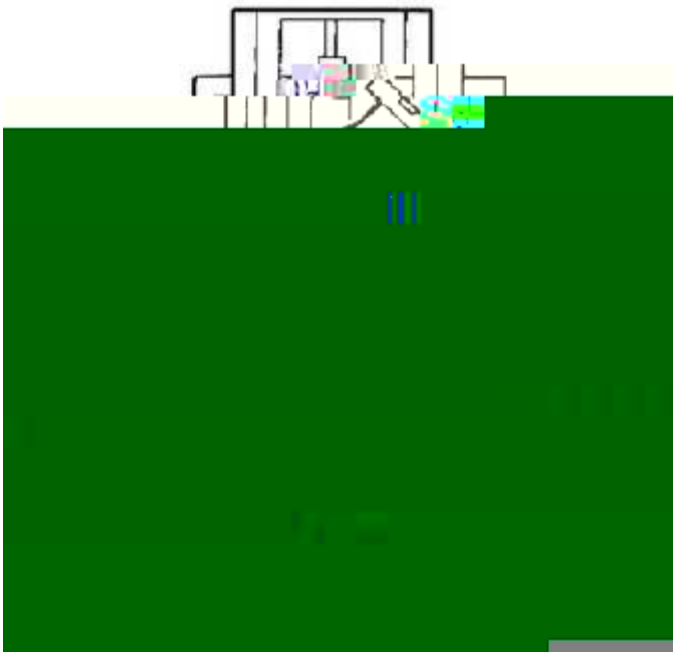
E

A

7

E

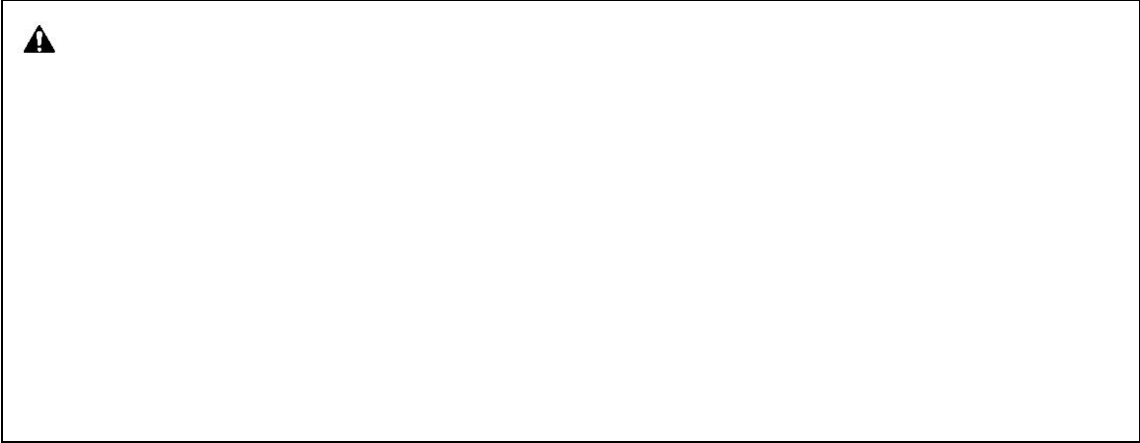
%



Turn to any point of 45° to adjust the short arm

4

4



5

7	2	G
---	---	---

Roll Clamp User Manual

C	4	3
	2	7
9	9	3
	C	7

3

E

%"

% E

% E

%%2

A

,

F

,

,

,

7

,

6

,

A

,

D

,

6

,

,

D

,

C

,

!

!!

,

F

%

E

% 2

2

% (

!

%

!!

%) 7

%

% 7

F

%"! 7

%""

%"

%"

%"%E

%" E



Roll Clamp User Manual

E

E

,

E

,

4

,

E

5

!! !!!

" !!

4

,

4

4

2

,

4

,

4

8 D2 6)! !

!!!

E

!!

4

! ,

E

9

,

4

:

,

4

"! "

,

F

"!

:

E

7

7



Roll Clamp User Manual

9

:

,

' %7

9

D

,

,

D

' D

:

,

2

,

:

,

9

,

2

,

9

' '

6

,



4

' (

u



Roll Clamp User Manual

E 2 6

E 2 4 E

(" E

2 6 E

