

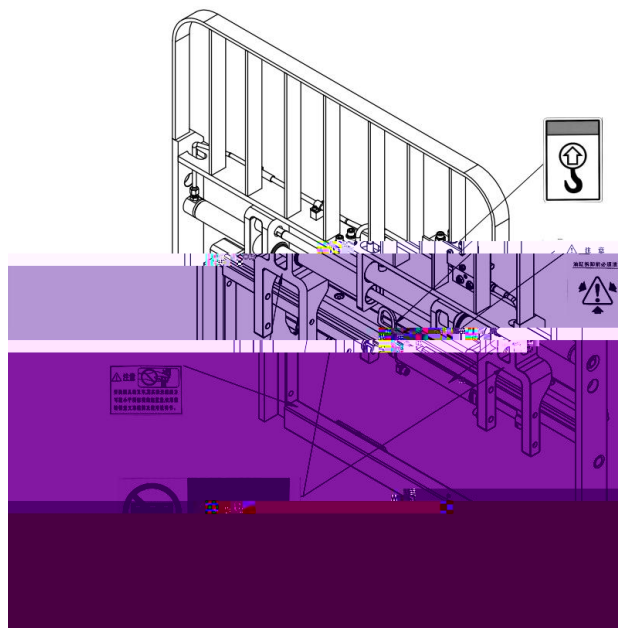
H

85



1	1
2	7
3	8
4	11
5	12
6	14
7	15







1 000

20

40

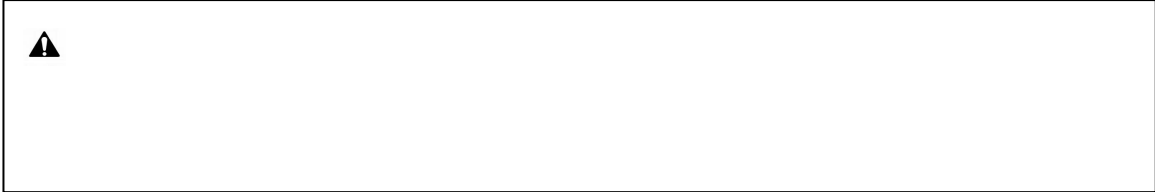
85





80

80



ISO4762 ISO4014 ISO4032

8.8

10.9

12.9

M10

45N

66N

77N

M12

77N

115N

135N

M16

190N

280N

330N

M20

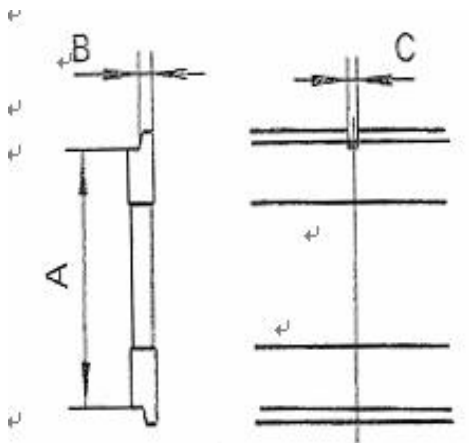
385N

550N

640N



	6.0LPM	8.0LPM	11.0LPM
	10.0LPM	15.0LPM	18.0LPM



	A		B		C	
	380	381	15	16	15.2	16.8
	474.5	476	20.5	21.5	18.2	19.8
	595.5	597	24.5	25.5	18.2	19.8

1

3.1

4

1

140N.

2

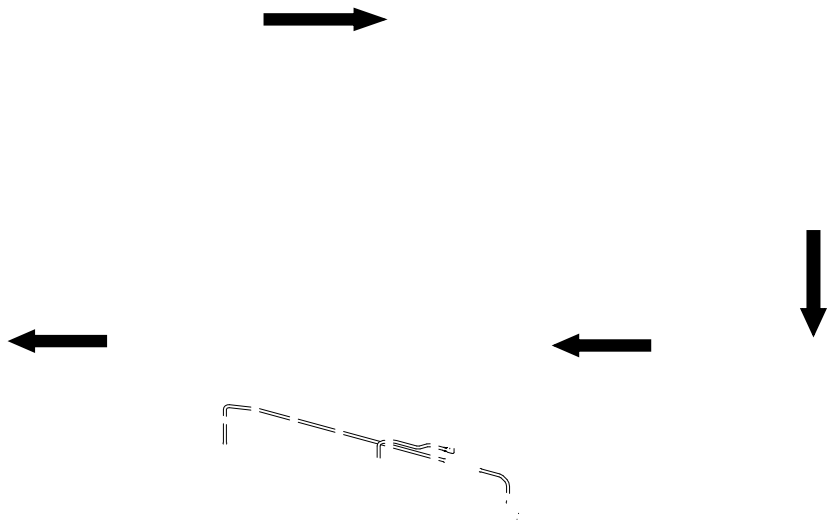
3

M16

4

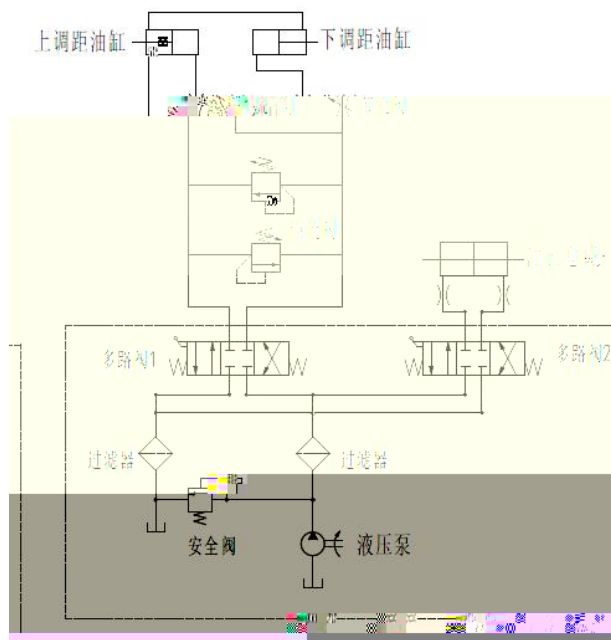
4

5



3.2

M18 1.5



- ▲
- ▲
- ▲
- ▲
- ▲
- ▲





6.1.1

6.1.2

6.1.3

6.2.1

6.2.2

6.2.3

6.2.4

6.3.1

6.3.2

1

12

1000

2

